

Facts and figures



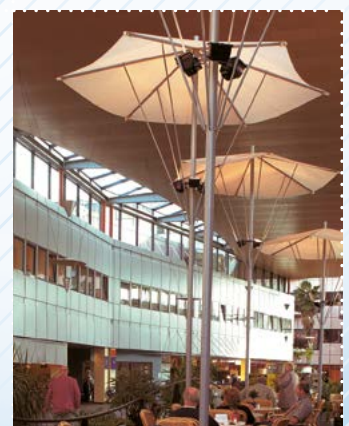
Facts and figures (as of December 31, 2015)

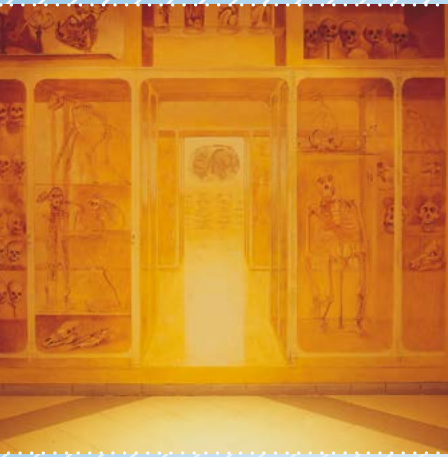
Beds (incl cots)	1,339
Occupancy rate (percentage)	68,63%
Admissions	35,000
Average inpatient stays (in days) Inclusive Rehabilitation and Psychiatry	8,6
Inpatient days	303,356
Total consultations	840,549
of which Emergency Department (CSO)	35,366
First visits outpatient's clinic	183,873
X-ray procedures	
Diagnostics	191,696
MRI	25,427
IVF treatments	1,530
Open heart surgery	1,055
Kidney transplants	179
Liver transplants	59
(Heart/)lung transplants	35
Bone-marrow transplants	137



umcg

Building the future of health





Remarkable facts

- Central focus for its core activities of patient care, research and education & training:
Healthy Ageing: Growing old actively and in good health.
- Largest employer in the north of the Netherlands.
- Most prominent UMC Groningen Transplant Center in the Netherlands; the only medical center licensed to perform all forms of transplants.
- UMC Groningen Cancer Center
Top specialists work in close collaboration in multidisciplinary teams to give patients the best possible care. As a knowledge institute and high-grade therapeutic center it is the pivot of the regional cancer care network. As for its scientific research, UMCG works with (inter)national academic cancer centers across Europe, the US and Canada.
- The University of Groningen, the University Medical Center Groningen and the Carl von Ossietzky University in Oldenburg (Germany) have initiated a joint medical school.
The European Medical School is the first cross-border medical school in Europe.

- 419 medical-school graduates
- 209 PhD degrees
- 2,450 ISI publications
- 3,568 researchers
- The Mobile Medical Team: action on the ground 421 and helicopterflights 1,333

Employees

Employees	12,141
Employees fte	8,719
Women	8,463 (70%)
Men	3,678 (30%)
Volunteers	477
Medical students (October 1st)	
Bachelor	1,439
Master	1,510



University Medical Center Groningen
 P.O. Box 30.001
 9700 RB Groningen
 The Netherlands
 Visiting address Hanzeplein 1
 Telephone (+ 31) 50 361 61 61
www.umcg.nl



umcg